



## MAP KEY

- BUILDING
- PARKING AREA
- PUBLIC ACCESS ROAD
- RESTRICTED ACCESS ROAD
- PEDESTRIAN PATH
- FIRE TRAIL/UNPAVED ROAD

- SHUTTLE STOPS
- DINING AREAS
- WHEELCHAIR ACCESSIBLE
- RESTROOMS
- EMERGENCY SERVICES



# WELCOME TO Banana Slug Day

## 1 QUARRY AMPHITHEATER COWELL COLLEGE BOOKSTORE

8:30 a.m. - 9:00 a.m.	Welcome Session
9:00 a.m. - 10:00 a.m.	The Colleges & Housing Information Session #1
10:00 a.m. - 11:00 a.m.	Social Sciences Division Welcome
11:00 a.m. - 12:00 p.m.	The Colleges & Housing Information Session #2
12:00 p.m. - 1:00 p.m.	Student Performances
1:00 p.m. - 1:15 p.m.	Alumna Keynote, feat. Meredith Turner
1:15 p.m. - 2:00 p.m.	The Colleges & Housing Information Session #3
2:00 p.m. - 3:00 p.m.	Science Lecture: Thinking Machines: Challenges & Opportunities in AI
3:00 p.m. - 4:00 p.m.	Slug Parent Panel

## 2 EAST FIELD EAST FIELD HOUSE

7:30 a.m. - 5:00 p.m.	Information/Check-in/Swag Tables
8:00 a.m. - 5:00 p.m.	Food Trucks
9:00 a.m. - 3:00 p.m.	Campus Tours
9:00 a.m. - 3:00 p.m.	Resource Fair

## 3 COWELL COLLEGE COWELL COLLEGE BOOKSTORE

9:00 a.m. - 4:00 p.m.	Offer Acceptance Hub/ Mock Dorm Room/ Social Circle & Games Cowell Provost House
12:00 p.m. - 5:00 p.m.	Eloise Pickard Smith Gallery

## 4 CLASSROOM UNITS 1 & 2 COWELL COLLEGE BOOKSTORE

10:00 a.m. - 10:45 a.m.	Tu Comunidad at UCSC Session #1 Classroom Unit 2
11:00 a.m. - 11:45 a.m., 1:00 p.m. - 1:45 p.m.	Career Success Information Sessions Classroom Unit 2
11:00 a.m. - 12:00 p.m.	Student Union Assembly Workshop #1 Classroom Unit 1
1:00 p.m. - 2:00 p.m.	Student Union Assembly Workshop #2 Classroom Unit 1
2:00 p.m. - 2:45 p.m.	Tu Comunidad at UCSC Session #2 Classroom Unit 2

## 5 BASKIN ENGINEERING SCIENCE HILL

9:00 a.m. - 9:45 a.m.	Baskin Engineering Welcome #1 Baskin Auditorium
10:00 a.m. - 10:45 a.m.	Baskin Engineering Welcome #2 Baskin Auditorium
11:00 a.m. - 11:45 a.m., 1:00 p.m. - 1:45 p.m., 3:00 p.m. - 3:45 p.m.	Computer Science, Computer Engineering, Network & Digital Technology Panel Baskin Auditorium
11:00 a.m. - 11:45 a.m.	Undergrad Research Opportunities Engineering 2, Room 180
12:00 p.m. - 12:45 p.m.	Computer Game Design Panel Baskin Auditorium
12:00 p.m. - 12:45 p.m.	Biomolecular Engineering & Bioinformatics Panel Engineering 2, Room 180
1:00 p.m. - 1:45 p.m.	Career Services at Baskin Engineering Engineering 2, Room 180
2:00 p.m. - 2:45 p.m.	Electrical Engineering & Robotics Panel Baskin Auditorium
2:00 p.m. - 2:45 p.m.	Technology & Info Mgmt. & Applied Mathematics Panel Engineering 2, Room 180
3:00 p.m. - 3:45 p.m.	Electrical Engineering & Robotics Panel Engineering 2, Room 180

## 6 COMMUNICATIONS BUILDING RACHEL CARSON COLLEGE/PORTER

11:00 a.m. - 2:00 p.m., departing hourly	Film and Digital Media Tours
---	------------------------------

## 7 ARTS COMPLEX RACHEL CARSON COLLEGE/PORTER

9:00 a.m. - 12:00 p.m. & 1:00 p.m. - 4:00 p.m., hourly sessions	UCSC Next Steps, presented by Orientation Media Theater, M110
9:00 a.m. - 4:00 p.m.	Elena Baskin Visual Arts Open House and Tours Elena Baskin Visual Arts Courtyard
10:00 a.m. - 11:15 a.m.	Arts Division Welcome Digital Arts Research Center 108
11:30 a.m. - 12:15 p.m.	Arts Student Panel Digital Arts Research Center 108

## 8 HUMANITIES QUAD COWELL COLLEGE BOOKSTORE

9:15 a.m. - 10:00 a.m.	Humanities Division Welcome Humanities Lecture Hall
11:15 a.m. - 12:00 p.m.	Humanities Faculty Panel: Living in Two Languages: How Bilingualism Shapes Who We Are Humanities Lecture Hall
2:15 p.m. - 3:00 p.m.	Student Panel: Inside Undergraduate Humanities Research Humanities 1, Conference Room 210
3:15 p.m. - 4:00 p.m.	Student Panel: Humanities in Action Humanities 1, Conference Room 210

## 9 STEVENSON COLLEGE COWELL COLLEGE BOOKSTORE

9:00 a.m. - 4:00 p.m.	Financial Aid One-on-one Drop-in Advising Stevenson Event Center
10:15 a.m. - 11:00 a.m.	Humanities Lecture: Time Travel for Beginners Stevenson Academic Building, Room 150
1:15 p.m. - 2:00 p.m.	Humanities Lecture: Talk the Talk, Walk the Walk: How Fashion Speaks Us Stevenson Academic Building, Room 150

## 10 SCIENCE HILL SCIENCE HILL

7:30 a.m. - 5:00 p.m.	Information/Check-in/ Swag Tables
8:00 a.m. - 5:00 p.m.	Food Trucks Lot 113 at Science Hill
9:00 a.m. - 12:00 p.m. & 1:00 p.m. - 4:00 p.m., hourly sessions	Summer Edge Information Sessions Natural Sciences Annex, Room 101
9:00 a.m. - 3:00 p.m.	Campus Tours
10:00 a.m. - 12:00 p.m.	Norris Center for Natural History Open House & Skull Identification Activity Natural Sciences Building, Room 239
11:00 a.m. - 11:45 a.m.	Supporting Your LGBTQIA+ Banana Slug Physical Sciences Room 110
11:00 a.m. - 11:45 a.m.	"Going Global" - Global Learning Information Session #1 Thimann Lecture Hall 001
11:00 a.m. - 12:00 p.m.	Slug Parent Panel Earth & Marine Sciences, B206
12:00 p.m. - 3:00 p.m.	Undergraduate Research Poster Session Science & Engineering Library
1:00 p.m. - 1:30 p.m.	Science Lecture: Physics Earth & Marine Sciences, B206
1:00 p.m. - 1:45 p.m.	Apoyando a tu "Banana Slug" LGBTQIA+ Physical Sciences 110
1:30 p.m. - 2:15 p.m.	"Going Global" - Global Learning Information Session #2 Thimann Lecture Hall 001
1:30 p.m. - 2:30 p.m.	Science Lecture: Math Is More than Equations Physical Sciences 114
1:30 p.m. - 3:00 p.m.	BioMed Tours Biomedical Sciences Research Building
3:00 p.m. - 4:00 p.m.	Science Excellence Student Panel Thimann Lecture Hall 001

## 11 KRESGE COLLEGE KRESGE COLLEGE

9:00 a.m. - 4:00 p.m.	Financing Your UCSC Education Kresge 3201
10:00 a.m. - 10:45 a.m. & 11:00 a.m. - 11:45 a.m.	Science Division Welcomes Kresge 3105
1:30 p.m. - 2:00 p.m.	Nobel Laureate Lecture: Science in the Neighborhood Kresge 3105

## 12 EAST FIELDHOUSE COMPLEX EAST FIELD HOUSE

9:00 a.m. - 4:00 p.m., hourly sessions	Athletics Information Sessions
9:00 a.m. - 4:00 p.m., 30-minute tours	Athletics Tours

## 13 HAY BARN MAIN GATE

1:00 p.m. - 2:30 p.m.	IGNITE Mixer #1
3:00 p.m. - 4:30 p.m.	IGNITE Mixer #2

## 14 GRANARY CAMPUS FACILITIES

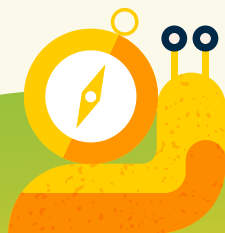
9:00 a.m. - 6:00 p.m.	Bay Tree Campus Store
-----------------------	-----------------------

## 15 SESNON ART GALLERY RACHEL CARSON COLLEGE/PORTER

12:00 p.m. - 5:00 p.m.	UCSC's Sesnon Art Gallery Porter College
------------------------	---

## 16 COASTAL SCIENCE CAMPUS NOT SERVED BY CAMPUS SHUTTLES

10:00 a.m. - 4:00 p.m.	UCSC's Seymour Marine Discovery Center 100 McAllister Way
------------------------	---



LOST? TRY USING  
GOOGLE MAPS! MOST  
CAMPUS BUILDINGS CAN  
BE FOUND THERE.

# Banana Slug Day

## Program Addendum

Please review these programming updates with today's agenda.

### Quarry Amphitheater

- 10:00 a.m. Social Science Division Welcome MOVED TO **9:00 a.m.** in Kresge College, Kresge 3105
- 11:00 a.m. The Colleges & Housing Information Session #2 MOVED TO **12:00 p.m.** in Kresge College, Kresge 3105
- 12:00 p.m. Student Performances MOVED TO Stevenson Event Center
- 1:00 p.m. Alumna Keynote, feat. Meredith Turner MOVED TO Kresge College, Kresge 3105
- 1:15 p.m. The Colleges & Housing Information Session #3 MOVED TO **2:00 p.m.** in Kresge College, Kresge 3105
- 2:00 p.m. Science Lecture: Thinking Machines: Challenges & Opportunities in AI MOVED TO Humanities Lecture Hall
- 3:00 p.m. Slug Parent Panel **CANCELLED**

### Science Hill

- 11:00 a.m. Slug Parent Panel in Earth & Marine Sciences B206 **CANCELLED**
- 1:00 p.m. Science Lecture: Physics in Earth & Marine Sciences B206 CHANGED TO **An Introduction to the Vera C. Rubin Observatory, and a Brief Overview of Research Opportunities in Physics and Astrophysics at UCSC**
- 1:00 p.m. NEW ADD General Chemistry Mock Lecture in Physical Sciences 240**
- 1:00 p.m. NEW ADD Earth & Planetary Sciences program overview, Degree Defining Experiences, research opportunities & building tour in Earth & Marine Sciences B210**
- 1:30 p.m. NEW ADD Research Seminar: Life Changing Science in Physical Sciences 240**
- 1:30 p.m. Math is More than Equations in Physical Sciences 114 CHANGED TO **The Nature of Mathematics**
- 2:00 p.m. NEW ADD Q&A Panel of Undergraduate Science Student Majors in Earth & Marine Sciences B210**
- 2:00 p.m. NEW ADD Astronomy and Astrophysics Research Opportunities in Physical Sciences 110**
- 3:00 p.m. NEW ADD Chemistry Club Student Panel in Physical Sciences 240**
- 3:00 p.m. NEW ADD Earth & Planetary Sciences program overview, Degree Defining Experiences, research opportunities & building tour in Earth & Marine Sciences B210**

### Granary

Bay Tree Campus Store MOVED TO College 9 Multipurpose Room [Google: College Nine and College 10 Multipurpose Room]

### Resource Fair Table Map Updates

- A3 & A4 Slugcast AND Division of Student Affairs & Success **CANCELLED**.
- L5 Bookshop Santa Cruz MOVED to Kresge College, Kresge 3101
- M3 Santa Cruz BCycle **CANCELLED**.